



WATERPROOFING  
CONCRETE FOR LIFE



## Central Rama II Shopping Centre, Thailand uses Radmyx sprinkle coat



SITE DETAILS	
COUNTRY:	Thailand
SITE:	Central Rama II Shopping Centre
ARCHITECT:	Urban Architects Co
APPLICATOR:	Radcon Thailand Co Ltd
CONTRACTOR:	K-Tech Cons & Eng Co
SIZE:	50,000 square metres

Figure 1: Central Rama II Shopping Centre during construction

Here our photo depicts Radmyx sprinkle coat crystal growth being applied to the basement floor.

Sprinkle coat is applied at 0.8kg per square metre. For quality control the appropriate amount of Radmyx drums have been laid out at regular intervals awaiting the concrete pours.

Crystal growths offer a good solution to waterproofing in Bangkok as the average settlement of structures can be up to 2cm each year. With this sort of settlement physical membranes can only be short term. When Radmyx is used and concrete cracks, water will reactivate the material allowing for resealing to take place.

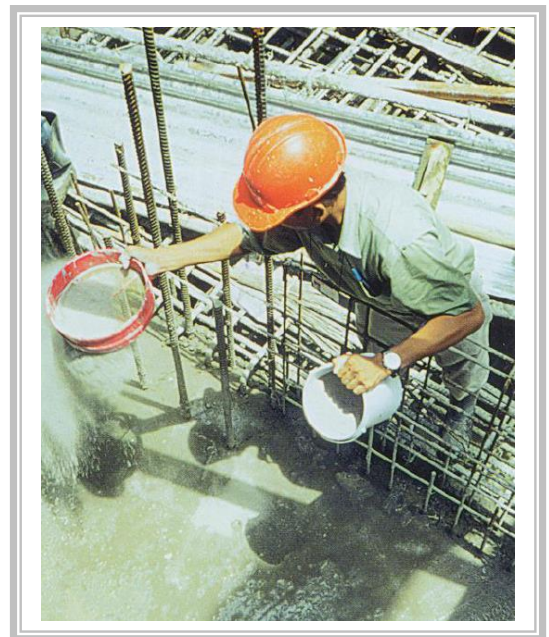


Figure 2: Sprinkle application

